



For Sale By Private Treaty

21 Cremona Road
Ballyfermot
Dublin 10
D10WT25

2 Bedroom | 1 Bathroom | Mid Terraced | 65 sq.m

Guide Price: €249,000



Scan to view Property

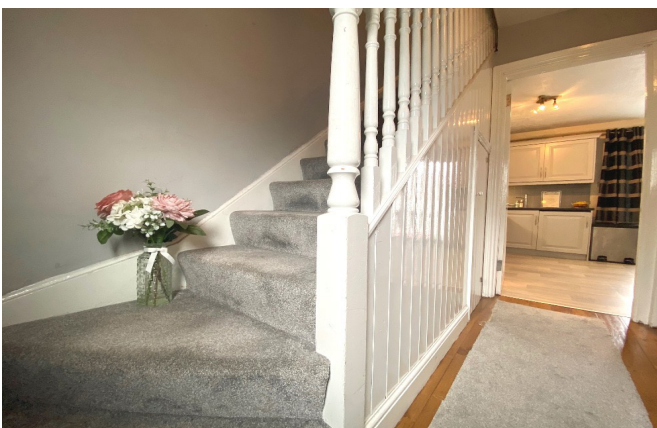


Description

RAY COOKE AUCTIONEERS take great pleasure in presenting 21 Cremona Road Ballyfermot, Dublin 10 to the market. This magnificent two bedroom mid terrace property has been beautifully maintained and is presented in excellent condition throughout. Internal living accommodation of c. 65 sq ft comprises of entrance hall, Lounge, open plan kitchen & dining room, two double bedrooms and main family bathroom. Dublin 10 is well serviced with excellent public transport links including the 18, 25N, 40, 76, 76A, 79, 79A bus routes. The Chapelizod bypass & M50 motorway are both very easily accessed and Liffey Valley Shopping Centre is within arm's reach. Ballyfermot offers a range of excellent facilities including a choice of well esteemed primary & secondary schools along with Ballyfermot College of Further Education, a variety of sports & leisure facilities and local shops + convenience stores.

Features

- BER D1
- c. 65 sqm
- Terraced family home
- Gas fired central heating
- Alarmed
- 2 bed | 1 bath
- Sunny south facing rear garden
- Open plan kitchen & dining room
- Prime opportunity for first time buyers
- Central location
- Within walking distance to Ballyfermot Village
- Host of transport route



Accommodation

Entrance Hall

10'1" x 5'5" (3.1m x 1.7m)

Laminate flooring with under stairs storage.

Lounge

9'1" x 9'8" (2.8m x 3.0m)

Laminate flooring.

Kitchen

15'7" x 11'1" (4.8m x 3.4m)

Laminate flooring, electric fire with fitted units.

Bedroom 1

11'4" x 10'8" (3.5m x 3.3m)

Double bedroom to the front of the property with carpet flooring and fitted wardrobes.

Bedroom 1

11'4" x 10'8" (3.5m x 3.3m)

Double bedroom to the front of the property with carpet flooring and fitted wardrobes.

Bedroom 2

10'8" x 8'8" (3.3m x 2.7m)

Double bedroom to the rear of the property with laminate flooring.

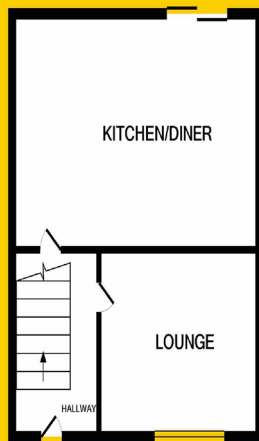
Bathroom

4'9" x 5'2" (1.5m x 1.6m)

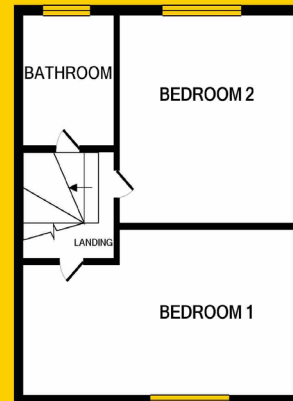
Fitted with WC, wash hand basin, fully tiled and shower.



Floor Plans



GROUND FLOOR



Negotiator

Alanna Tyrrell
01 403 0720 or 086 060 6879

Email: Alanna.tyrrell@raycooke.ie



Viewing

Viewings are strictly by appointment only. We are available for viewings during the day, in the evenings and also at the weekend so we are always available at a time to suit you.

**Ray
Cooke.**
Financial Services

For further information or advice,
Please call: 01 40 30 720 or 087 99 44 036

Mortgages

- Pre-approved Mortgage
- Expert Mortgage Advice
- Cheapest Interest Rates
- Choice of Lenders

Ray Cooke Financial Services Ltd is regulated by The Central Bank of Ireland.

**Ray
Cooke.**

Residential & Commercial Property Advice

Sales | Lettings | Property Management | Valuations | Mortgages



These particulars are for guidance only and do not form part of any contract. While every care has been taken in their preparation we do not hold ourselves responsible for any inaccuracies. They are issued on the understanding that all negotiations will be conducted through this firm. © Ray Cooke 2016.